

All you need is a key



Zetor



CATALOG OF TRACTORS



www.zetor.com

> tractor is zetor

ZETOR is a tractor producer with a tradition of more than sixty years. More than million tractors of this make have been produced since the beginning of its production in 1946. ZETOR is currently the leading industrial company in Central Europe and the biggest producer of tractor technologies among the new member countries in the European Union.

The current supply of innovated tractor series is a follow-up to the long-time tradition, quality and price availability for our products and services. The ZETOR tractors offer a perfect combination of power, simple operation and low operational expenses, as well as great reliability and operating time of the tractor and its individual components.

Zetor



PROXIMA page 4

models 65
75
85
95



PROXIMA OPEN STATION page 6

models 65
75
85
95



PROXIMA PLUS page 8

models 85
95
105



PROXIMA POWER page 10

models 85
95
105
115



FORTERRA page 12

models 95
105
115
125



Since 1946
tractor is zetor

PROXIMA



PROXIMA

Tractor model range Proxima corresponds with the more than 60 years of Zetor's know how, in-house tractor factory production and has the maximum power output along with a high reliability even in the toughest conditions.

Engine

Zetor Proxima tractors are powered by their own range of Zetor engines, which meet the Tier III emission standards and feature their low operational costs and high reliability.

Transmission

The tractors are equipped with a standard fully synchronized gear box 10+2, which has been improved in the new models to have better ergonomic use of the stick shift and the PTO controls.

Optional:

- Synchro shuttle gear box 12+12
- Overdrive 20+4
- Creeper 20+4

Front Drive Axel

The new model range of Proxima tractors has a new front axel Carraro 20.16 and a new bracket for the front ballasts.

- These, as a result, allow a 20 % higher loading capacity of the front drive axel

Front Three-point Linkage and PTO (optional)

Proxima tractors can have the optional three-point linkage and PTO (Zuidberg)

- The new implementation of the optional three-point linkage has a lifting capacity of 2300 kg
- The front PTO has a wet disc clutch with electro-hydraulic controls
- Maximum output of the front PTO is 60 kW
- Tail pieces of the front PTO have 6 or 21 splined shafts as an option

Engine Bonnet

The tractors have a new engine bonnet design which can be opened upwards in a tilting fashion. This manoeuvre allows easier accessibility of the tractor engine during servicing and maintenance. Along with these features, the new engine bonnet brings new lighting and a higher number of headlamps as a part of the standard design as well as a part of the optional features.

Cab

The tractor cab has all of the main controls ergonomically placed with an analogue display that is easily legible. New elements of the cab:

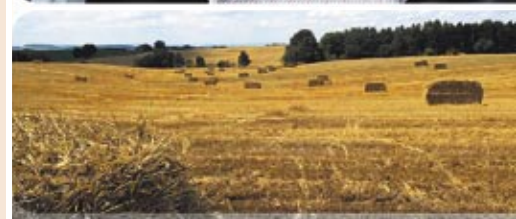
- New roof
- Galvanised steps
- 150 l fuel tank capacity, optional
- New placement of the battery under the cab

New interior enhancements:

- The right mudguard has an integrated cover for the hydraulic controls panel with a storage compartment, a 3-plug connector and a lighter
- New flooring – creates a higher noise reduction

Tractor Chassis

- New tyre dimensions: 540/65R34, 520/70R34 and 600/65R34



FLEXIBILITY
RELIABILITY
QUALITY



PROXIMA OPEN STATION



PROXIMA OPEN STATION

The Proxima - open station corresponds with the Zetor know-how of tractor design & production. Powerful, reliable & simple to operate. Proxima - open station is built to deliver maximum performance even under the toughest conditions.

Engine

Zetor Proxima open station tractors are powered by their own range of Zetor engines, which meet the Tier III emission standards and feature their low operational costs and high reliability.

Transmission

A fully synchrosed 10+2 gear box is in standard of 30 kmph models. The ergonomic design & layout of the controls ensure that the shift lever is well positioned and easy to operate.

Optional:

- Synchro shuttle gear box 12+12
- Overdrive 20+4
- Creeper 20+4

Front Drive Axel

The new model range of Proxima tractors has a new front axel Carraro 20.16 and a new console bracket for the front ballasts.

- These, as a result, allow for a 20 % higher loading capacity of the front drive axel

Engine Bonnet

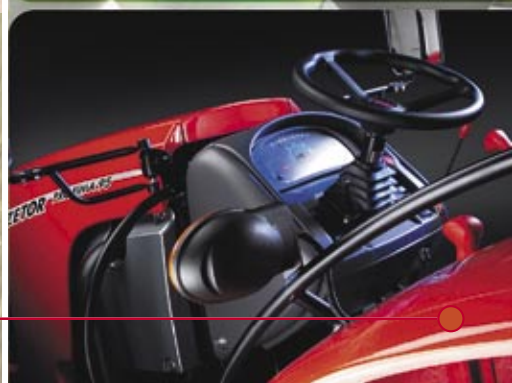
The tractors have a new engine bonnet design which can be opened upwards in a tilting fashion. Along with these features, the new engine bonnet brings new lighting and a higher number of headlamps.

External

- The new lights has crystal lenses for greater intensity
- Heavy duty battery positioned under the steps
- Galvanised steps
- Safety frame

Tractor Chassis

- New tyre dimensions: 540/65R34, 520/70R34 and 600/65R34



RELIABILITY
ENDURANCE
POWER



PROXIMA PLUS



PROXIMA
PLUS

These tractors are from the mid-size performance category focusing on their simple service, long life expectancy, versatility and their low cost.

Engine

Proxima Plus tractors are powered by their own range of Zetor engines, which meet the Tier III emission standards and at the same time feature their low operational costs as well as long term reliability. These engines are designed with a viscous clutch fan that contributes to their cost-effective operation and noise level reduction.

Transmission

A smooth shifting 16×16 power shift transmission incorporates synchro mechanical shuttle with a dash-mounted lever. Rear PTO has wet multi-disc clutch for smooth engagement and unique ground speed PTO system enabling the rotation of the PTO to be reversed even when the tractor is stationary.

Engine Bonnet

The tractors have a new engine bonnet design which can be opened upwards in a tilting fashion. The one-piece bonnet is easily tilted upwards to provide unrestricted access to all parts of the engine for daily maintenance and servicing. Along with these features, the new engine bonnet brings new lighting and a higher number of headlamps as a part of the standard design as well as part of the optional features.

Front Three-point Linkage and PTO (optional)

Proxima tractors can have the optional three-point linkage and PTO (Zuidberg)

- The new implementation of the optional three-point linkage has a lifting capacity of 2300 kg
- The front PTO has a wet disc clutch with electro-hydraulic controls
- Maximum output of the front PTO is 60 kW
- Tail pieces of the front PTO has 6 or 21 splined shafts as an option

Cab

The cab has all the main controls ergonomically placed with an analogue display that is easily legible. New elements of the cab are:

- New roof
- Integrated cover for hydraulic controls with a tidybox, a plug connector and a lighter point
- 150 l fuel tank capacity
- Galvanised steps

Tractor Chassis

- Rated tractor speed: 40 kmph (30 kmph optional) for all model ranges
- New tyre dimensions: 540/65R34, 520/70R34 and 600/65R34



VERSATILITY
RELIABILITY
POWER



PROXIMA POWER



PROXIMA
POWER

The Proxima Power series is a range of medium power tractors designed to meet the ever-growing needs of the market for improved versatility, comfort, safety and productivity.

The strong point of Proxima Power series is a hydraulic reverse power shuttle of the latest generation which makes the Proxima Power the most advanced tractor in its class.

Engine

Proxima Power is powered by turbo and inter-cooled engines, which are fully compliant with TIER III emission standards and are designed for low cost operation with long-term reliability. The one-piece bonnet is easily tilted upwards to provide unrestricted access to all parts of the engine for daily maintenance and servicing

Transmission

The three-stage power shift and power shuttle transmission enable operators to shift effortlessly from forward to reverse through 24 forward and 24 reverse speeds. A power shuttle lever is positioned so it is easy to be reached with left hand.

The PTO features an electro-hydraulically operated multi disc clutch that is designed to cope with the high torque engines characteristics. Ergonomically placed PTO switch is integrated in the right side of the cab frame. Front axle with 23 kN load capacity and a tight turning angle for outstanding manoeuvrability – making Proxima Power ideal for intensive loader work.

Cab

Proxima Power has a very spacious, comfortable cab and the most frequently used controls are grouped on the right side of the cab. Design of the controls, arranged in ergonomic position on the console makes driving a pleasure.

Comprehensive specification includes:

- Integrated cover for hydraulic controls with a tidybox, a plug connector and a lighter point
- New roof
- Rubber floor mat with sandwich construction for easy cleaning and increased heat insulation
- 175 l fuel tank capacity

Tractor Chassis

- New tyre dimensions: 540/65R34, 520/70R34 and 600/65R34



POWER
VARIABILITY
RELIABILITY



FORTERRA



FORTERRA

Tractors Zetor Forterra have the power range category from 97–130 HP with an attested design of robust Zetor engines and exceptionally good power shift parameters.

Engine

Zetor Forterra tractors are powered by their own range of Zetor 4 cylinder engines, turbo-charged & inter-cooled engines that use latest technology to deliver exceptional power with torque backup of up to 37 % and outstanding fuel economy. These engines are designed with a viscous clutch of fan that contributes to their cost-effective operation and noise level reduction.

Transmission

A smooth shifting 24×18 three speed power shift transmission with forward synchroshuttle & three speed power shifts are controlled by stick mounted buttons. All models are equipped with cerametalic clutch plates for enhanced performance & reliability. The hydraulic circuits of power shift and PTO are designed with a new electro-hydraulic distributor.

Hydraulic system

Powerful electronic hydraulic with 5.8 tonne lift capacity is in standard equipment of all models, as well as lower link sensing.

Cab

The tractor cab has all of the main controls ergonomically placed with an analogue display that is easily legible. New elements of the cab:

- 205 l fuel tank capacity, optional
- New roof
- New placement of the battery under the cab
- Galvanised steps

New interior enhancements:

- The right mudguard has an integrated cover for the hydraulic controls panel with a storage compartment, a 3-plug connector and a lighter
- New flooring – creates a higher noise reduction

Front Three-point Linkage and PTO (optional)

Forterra tractors can have the optional three-point linkage and PTO (Zuidberg)

- The new implementation of the optional three-point linkage has a lifting capacity of 3500 kg
- The front PTO has a wet disc clutch with electro-hydraulic controls
- The maximum output of the front PTO is 60 kW
- Tail pieces of the front PTO have 6 or 21 splined shafts as an option

Tractor Chassis

- New tyre dimensions: 600/65R38, 520/70R38



POWER
RELIABILITY
ENDURANCE



ZETOR PROXIMA

MODEL	UNITS	65	75	85	95
ENGINE					
Model		Zetor 7205	Zetor 1105	Zetor 1205	Zetor 1005
Power ISO TR 14396		48/65	57/78	65/89	71/97
Power ECE R24	kW/HP	45/61	53/72	60/82	66/90
Rated speed	rpm			2200	
No. of cylinders				4	
Aspiration				turbocharged	
Bore/Stroke	mm			105/120	
Displacement	cc			4156	
Torque reserve	%	36	37	35	35
Emissions				TIER III	
CLUTCH					
Type				dry, dual-purpose, hydraulic control	
Diameter	mm			310	
Lining				cerametallic	
TRANSMISSION					
Type				mechanical	
Shifting				fully synchronised	
Gears forward/reverse				standard 10/2	
Optional				synchronised shuttle 12/12, creeper 20/4, overdrive 20/4	
Speed	kmph			2WD cab models (30 kmph) / 4WD cab models (40 and 30 kmph)	
PTO SHAFT					
Type				independent, ground speed PTO standard	
Speeds	rpm			540/1000 or 540/540E (540 on models with shuttle or creeper)	
Front PTO	rpm			+1000 (-1000), optional	
HYDRAULICS					
Type				mechanical, top link draft sensing	
Three point linkage				category I and II	
Control				position, draft, mixed	
Lift capacity	kN	32	40	40	40
Operating pressure	MPa			18	
Pump capacity	(l/min)	40	50	50	50
SCV's				one set of remotes standard	
OTHER					
Drive system				2WD/4WD	
Operator's station				safety cab	
Steering				hydrostatic	
Service brake				wet disc brake, hydraulic control	
Parking brake				mechanical control	
Front axle 2WD				2° tilting	
Front axle 4WD				55° turning angle, limited slip front differential, 40 km version braked	
Rear axle				drop axle design, differential lock (engaged electro-pneumatically)	
DIMENSIONS					
Lenght	mm			3875	
Width	mm			1910	
Height 2WD/4WD	mm			2622/2671	
Wheel base 2WD/4WD	mm			2321/2236	
Ground clearance	mm			490/402	
Standard front tyres				7.50-16/11.2-24	
Standard rear tyres		16.9-28	16.9-28	16.9-30	16.9-30
Weight 2WD/4WD	kg			3130/3630	
OPTIONAL					

- adjustable steering wheel ■ A/C ■ adjustable trailer hitch ■ pick-up hitch
- front three point hitch ■ front and rear weights ■ block heater
- mate's seat ■ hydraulic or air pressure trailer brakes ■ open station models
- choice of tyre combinations ■ emission stage II ■ flashing beacon
- carbon filters ■ hydraulic oil drain ■ engine with emission stage TIER II



ZETOR PROXIMA OPEN STATION

MODEL	UNITS	65	75	85	95
ENGINE					
Model		Zetor 7205	Zetor 1105	Zetor 1205	Zetor 1005
Power ISO TR 14396		48/65	57/78	65/89	71/97
Power ECE R24	kW/HP	45/61	53/72	60/82	66/90
Rated speed	rpm	2200			
No. of cylinders		4			
Aspiration		turbocharged			
Bore/Stroke	mm	105/120			
Displacement	cc	4156			
Torque reserve	%	36	37	35	35
Emissions		TIER III			
CLUTCH					
Type		dry, dual-purpose, hydraulic control			
Diameter	mm	310			
Lining		cerametallic			
TRANSMISSION					
Type		mechanical			
Shifting		fully synchronised			
Gears forward/reverse		standard 10/2			
Optional		synchronised shuttle 12/12, creeper 20/4, overdrive 20/4			
Speed	kmph	30			
PTO SHAFT					
Type		independent, ground speed PTO standard			
Speeds	rpm	540, 540/1000 optional			
HYDRAULICS					
Type		mechanical, top link draft sensing			
Three point linkage		category I and II			
Control		position, draft, mixed			
Lift capacity	kN	32	40	40	40
Operating pressure	MPa	18			
Pump capacity	(l/min)	40	50	50	50
SCV's		one set of remotes standard			
OTHER					
Drive system		2WD/4WD			
Operator's station		open station with safety frame			
Steering		hydrostatic			
Service brake		wet disc brake, hydraulic control			
Parking brake		mechanical control			
Front axle 2WD		2° tilting			
Front axle 4WD		55° turning angle, limited slip front differential			
Rear axle		drop axle design, differential lock (engaged mechanically)			
DIMENSIONS					
Length	mm	3875			
Width	mm	1910			
Maximum height up to the safety frame top	mm	2758/2770			
Wheel base 2WD/4WD	mm	2321/2236			
Ground clearance 2WD/4WD	mm	490/402			
Standard front tyres		7.50-16/11.2-24			
Standard rear tyres		16.9-28			
Weight 2WD/4WD	kg	16.9-28	16.9-28	16.9-30	16.9-30
		2915/3225			
OPTIONAL					

- adjustable steering wheel ■ adjustable trailer hitch ■ pick-up hitch
- front and rear weights ■ hydraulic trailer brakes
- choice of tyre combinations ■ canopy ■ flashing beacon
- engine with emission stage TIER II



ZETOR PROXIMA PLUS

MODEL	UNITS	85	95	105
ENGINE				
Model		Zetor 1205	Zetor 1005	Zetor 1305
Power ISO TR 14396		65/89	71/97	79/108
Power ECE R24	HP	60/82	66/90	74/100
Rated speed	rpm		2200	
No. of cylinders			4	
Aspiration			turbocharged	
Bore/Stroke	mm		105/120	
Displacement	cc		4156	
Torque reserve	%		35	
Emissions			TIER III	
CLUTCH				
Type			dry, single plate, hydraulic control	
Diameter	mm		310	
Lining			cerametallic	
TRANSMISSION				
Type			two-stage power shift	
Shifting			fully synchronised	
Gears forward/reverse			16/16	
Speed	kmph	30 and 40	40	
PTO SHAFT				
Type			live/ground speed, wet multi-plate PTO clutch	
Speeds	rpm		540/1000 (540/540E)	
Front PTO - speed	rpm		+1000 (-1000), optional	
HYDRAULICS				
Type			mechanical, top link draft sensing	
Three point linkage			category I and II	
Control			position, draft, mixed	
Lift capacity	kN		41.5	
Operating pressure	MPa		18	
Pump capacity	(l/min)		50	
SCV's			three set of remotes standard	
OTHER				
Drive system			4WD	
Operator's station			cab version	
Steering			hydrostatic	
Service brake			wet disc brake, hydraulic control	
Parking brake			mechanical control	
Front axle 4WD			Carraro 20.16, wet brakes in wheels	
Rear axle			differential lock engaged electro-pneumatically	
DIMENSIONS				
Lenght	mm		3670	
Width	mm		1910	
Height	mm		2718	
Wheel base	mm		2328	
Ground clearance	mm		402	
Standard front tyres			11.2-24	
Standard rear tyres			16.9-30	
Weight	kg		3740	
OPTIONAL				

- adjustable steering wheel ■ A/C ■ adjustable trailer hitch
- pick-up hitch ■ front three point hitch ■ front and rear ballast weights
- block heater ■ Grammer air suspended seats ■ mate's seat
- hydraulic or air pressure trailer brakes ■ carbon filters
- choice of tyre combinations ■ hydraulic oil drain ■ flashing beacon



ZETOR PROXIMA POWER

MODEL	UNITS	85	95	105	115
ENGINE					
Model		Zetor 1205	Zetor 1005	Zetor 1305	Zetor 1405
Power ISO TR 14396		65/89	71/97	79/108	86/117
Power ECE R24	HP	60/82	66/90	74/100	81/110
Rated speed	rpm	2200			
No. of cylinders		4			
Aspiration		turbocharged			
Bore/Stroke	mm	105/120			
Displacement	cc	4156			
Torque reserve	%	35			
Emissions		TIER III			
POWER SHUTTLE					
Type		multi disc wet clutch			
Control		electrohydraulically operated			
TRANSMISSION					
Type		three-stage power shift			
Shifting		fully synchronised			
Gears forward/reverse		24/24			
Speed	kmph	40			
PTO SHAFT					
Type		live/ground speed, wet multi-plate PTO clutch			
Speeds	rpm	540/1000 (540/540E)			
Front PTO - speed	rpm	+ 1000 (-1000), optional			
HYDRAULICS					
Type		mechanical, top link draft sensing			
Three point linkage		category I and II			
Control		position, draft, mixed			
Lift capacity	kN	41.5			
Operating pressure	MPa	18			
Pump capacity	(l/min)	50			
SCV's		three set of remotes standard			
OTHER					
Drive system		4WD			
Operator's station		cab version, noise 78 dB(A)			
Steering		hydrostatic			
Service brake		wet disc brake, hydraulic control			
Parking brake		mechanical control			
Front axle 4WD		Carraro 20.16, wet brakes in wheels			
Rear axle		differential lock engaged electro-pneumatically			
DIMENSIONS					
Lenght	mm	3905			
Width	mm	1910			
Height	mm	2718			
Wheel base	mm	2328			
Ground clearance	mm	402			
Standard front tyres		11.2-24			
Standard rear tyres		16.9-30			
Weight	kg	4000			
Fuel tank	l	175			
OPTIONAL					

- adjustable steering wheel ■ A/C ■ adjustable trailer hitch ■ pick-up hitch
- front three point hitch ■ front and rear ballast weights
- block heater ■ Grammer air suspended seats ■ mate's seat
- hydraulic or air pressure trailer brakes ■ carbon filters
- choice of tyre combinations ■ hydraulic oil drain ■ flashing beacon



ZETOR FORTERRA

MODEL	UNITS	95	105	115	125
ENGINE					
Model		Zetor 1005	Zetor 1305	Zetor 1405	Zetor 1505
Power ISO TR 14396		71/97	79/108	86/117	95/130
Power ECE R24	HP	66/90	74/101	81/110	90/120
Rated speed	rpm			2200	
No. of cylinders				4	
Aspiration				turbocharged	
Bore/Stroke	mm			105/120	
Displacement	cc			4156	
Torque reserve	%	37	37	37	35
Emissions				TIER III	
CLUTCH					
Type				dry, single plate, hydraulic control	
Diameter	mm			325	
Lining				cerametallic	
TRANSMISSION					
Type				mechanical, hydraulically controlled three-speed power shift	
Shifting				fully synchronised	
Gears forward/reverse				24/18	
Speed	kmph			40	
PTO SHAFT					
Type				independent, ground speed standard, multi-plate PTO clutch	
Speeds	rpm			540/1000	
Front PTO	rpm			+1000 (-1000), optional	
HYDRAULICS					
Type				electrohydraulic ZMS 23 LS	
Three point hitch				category II	
Control				electric continuous control	
Lift capacity	kN			58.5	
Operating pressure	MPa			18	
Pump capacity	(l/min)			70 standard, 60 optional	
SCV's				3 sets standard (6+1 remote outlets), 2 sets optional	
OTHER					
Drive system				4WD	
Operator's station				cab version only	
Steering				hydrostatic	
Service brake				wet disc brake, hydraulic control	
Parking brake				mechanical control	
Front axle 4WD				55° turning angle, limited slip front differential, braked, fenders	
Rear axle				epicyclic final reduction, differential lock engaged electro-pneumatically	
DIMENSIONS					
Lenght	mm			4670	
Width	mm			2164	
Height	mm			2720	
Wheel base	mm			2390	
Clearance	mm			417	
Standard front tyres		12.4-28	12.4-28	12.4-28	14.9R24
Standard rear tyres		16.9-38	16.9R38	16.9R38	16.9R38
Weight	kg			4550	
OPTIONAL					

- adjustable steering wheel ■ A/C ■ rear PTO 750/1000 rpm
- Grammer air suspended seats ■ mate's seat ■ adjustable trailer hitch
- pick-up hitch ■ front three point hitch ■ front and rear weights
- block heater ■ choice of tyre combinations ■ carbon filters
- hydraulic or air pressure trailer brakes ■ digital display dashboard
- heated external mirrors and rear window ■ flashing beacon





POWER



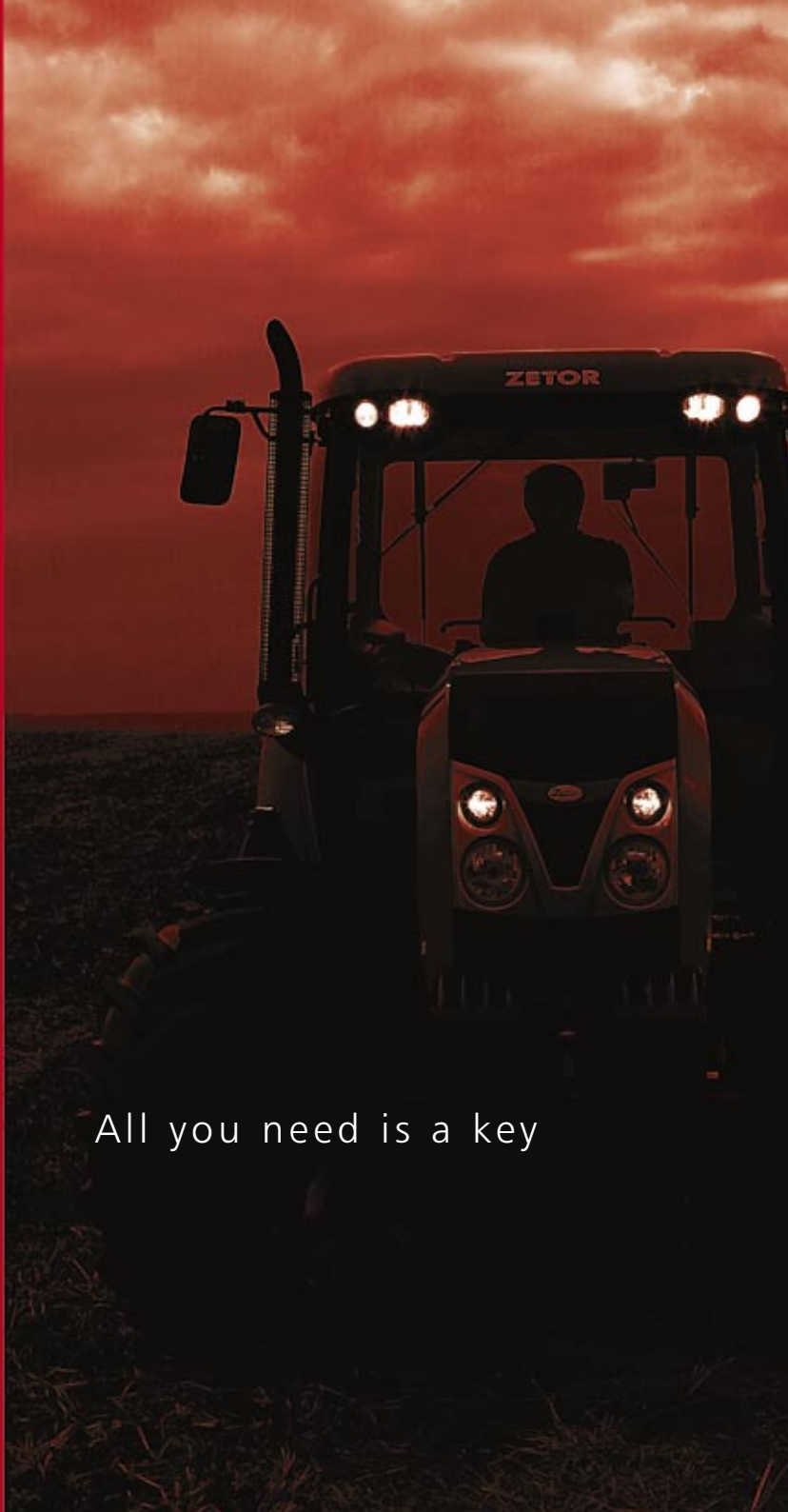
QUALITY



FLEXIBILITY



TRADITIONS



All you need is a key

[T R A C T O R I S Z E T O R]

Zetor

Trnkova 111, 628 00 Brno
Czech Republic
www.zetor.com

Info:

