

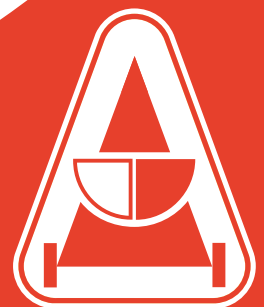
ZETOR

SYSTEM *Trac - Lift* 



Powerful

NEW LINE OF FRONT END LOADERS



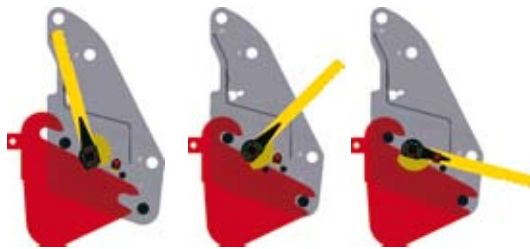
NEW LINE POWERFUL MERITS

New, modernized design

Improved construction of new line „Powerful“ is based on increasing demands of users on quality, reliability, price, design and comfortable using.



Original hydraulic hose connection system in loader connection clamps stops unwanted hose movement near exhaust and front window.



Unique connecting system allows quick, solid and safe connection of the loader to the tractor.



Comfortable access to all service points.



New tractor bracket construction is mainly focused on stiffness and easy access to all service points of the tractor.



Protected hydraulic system is placed inside the loader arms and inside front bracing strut. The bracing strut also increases solidity of the loader.



New design of support feet improves comfort while using.

ATTACHMENTS



Standard bucket

	BD 135	BD 160	BD 185	BD 210
Width	1,35 m	1,60 m	1,85 m	2,10 m
Capacity	0,41 m ³	0,48 m ³	0,56 m ³	0,63 m ³
Weight	180 kg	200 kg	220 kg	240 kg



Bucket with teeth

	BDT 135	BDT 160	BDT 185	BDT 210
Width	1,35 m	1,60 m	1,85 m	2,10 m
Capacity	0,41 m ³	0,48 m ³	0,56 m ³	0,63 m ³
Weight	205 kg	235 kg	265 kg	295 kg



Big volume bucket

	BDL 185	BDL 215	BDL 240
Width	1,85 m	2,15 m	2,40 m
Capacity	0,96 m ³	1,12 m ³	1,25 m ³
Weight	290 kg	325 kg	355 kg



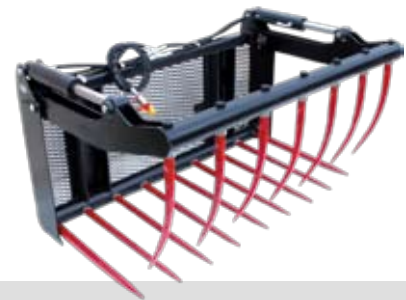
Silage cutter

	SC 110	SC 140	SC 170
Width	1,1 m	1,4 m	1,7 m
Capacity	0,9 m ³	1,1 m ³	1,3 m ³
Weight	375 kg	440 kg	505 kg



Multibucket

	BM 130	BM 150	BM 170	BM 190
Width	1,3 m	1,5 m	1,7 m	1,9 m
Capacity	0,65 m ³	0,75 m ³	0,85 m ³	0,95 m ³
Weight	230 kg	280 kg	330 kg	380 kg



Grab fork

	FG 130	FG 150	FG 170	FG 190
Width	1,3 m	1,5 m	1,7 m	1,9 m
Capacity	0,7 m ³	0,8 m ³	0,9 m ³	1,0 m ³
Weight	220 kg	270 kg	320 kg	370 kg



Tongs for round bales

	TB 160	TB 200
Width	1,3 m	1,5 m
Weight	210 kg	240 kg



Pallet fork

	FP 115	FP 130	FP 130
Width	1,15 m	1,30 m	1,30 m
Lifting capacity	1250 kg (na pár)	1250 kg (na pár)	2000 kg (na pár)
Weight	155 kg	160 kg	200 kg



Pallet lock

	PL
Agregace	FP 115 a FP 130
Weight	64 kg



Fork

	F 130	F 150	F 170	F 190	F 210
Width	1,3 m	1,5 m	1,7 m	1,9 m	2,1 m
The number of spikes	7	8	9	10	11
Weight	115 kg	135 kg	150 kg	165 kg	180 kg



Bale fork

	FB 110
Width	1,1 m
The number of spikes	3
Weight	125 kg

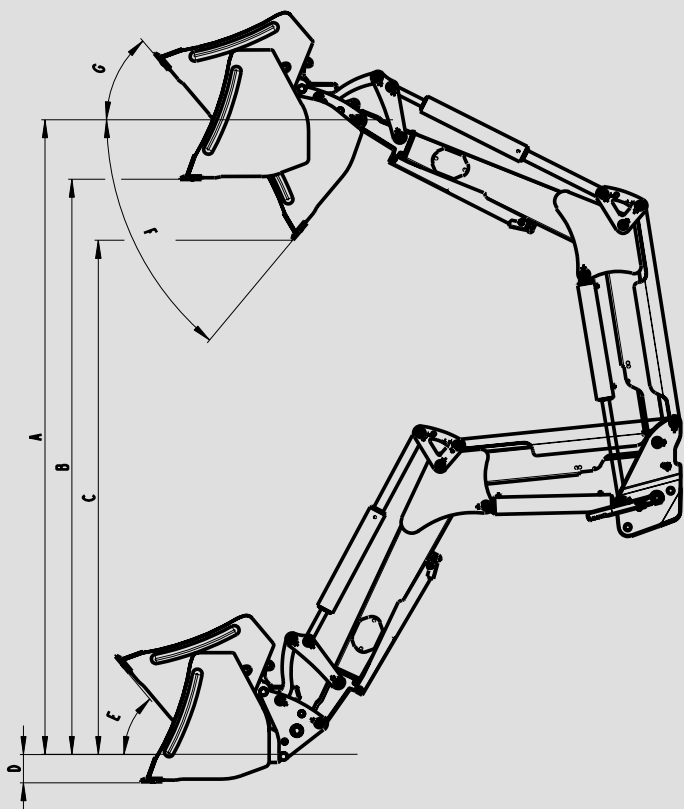


Stacking equipment

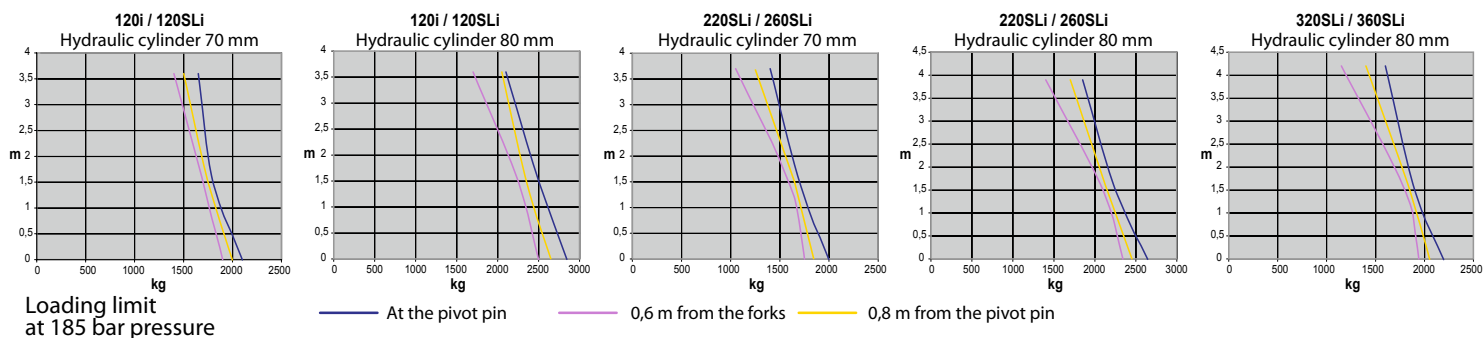
	ES 120
Width	1,2 m
The number of spikes	3
Weight	300 kg

High quality attachments with proven euro-hitch system can be used on current version same as on new Powerfull line.

TECHNICAL SPECIFICATIONS



	120i/120SLi 50 - 80 HP	120i/120SLi 50 - 80 HP	220SLi/260SLi 70 - 110 HP	220SLi/260SLi 70 - 110 HP	320SLi/360SLi 780 - 120 HP
Hydraulic cylinder	70 mm	80 mm	70 mm	80 mm	80 mm
A - Lift height to pivot pin	3580	3580	3880	3880	4180
B - Loading height	3260	3260	3560	3560	3860
C - Filling height	2650	2650	2950	2950	3250
D - Depth reach	200	200	250	250	250
E - Roll back angle at the bottom	45°	45°	45°	45°	45°
F - Dump angle at the top	70°	70°	65°	65°	60°
G - Rollback angle at the top	50°	50°	55°	55°	55°
Lifting capacity down /at the pivot pin/	2100 kg	2850 kg	2000 kg	2650 kg	2200 kg
Lifting capacity up /at the pivot pin/	1650 kg	2100 kg	1400 kg	1850 kg	1600 kg
Lifting capacity on pallet fork down – 0,8 m from the pivot pin	2000 kg	2650 kg	1850 kg	2450 kg	2000 kg
Lifting capacity on pallet fork ab – 0,8 m from the pivot pin	1500 kg	2150 kg	1250 kg	1700 kg	1400 kg



Humpolecké strojírný Humpolec a.s.

Pražská 490
396 18 Humpolec
Czech Republic
e-mail: hsh@trac-lift.cz
www.trac-lift.cz

telefon: +420 565 451 143
+420 602 320 305
fax: +420 565 451 107

